

TE5

Touch Screen Ultrasound System

Simple | Focused | Smart



Professional design for clinical focus

For satisfying increasing clinical demands of ultrasound scanning, the TE5 is a specialty ultrasound system with a completely new design, where every detail of practical use has been taken into consideration and ultimately realized for anesthetists and physicians.

Up to 20MHz ultra-high frequency linear transducer can visualize the finest nerves and fibers with extremely high resolution.

Seamless monitor with full touch screen and exclusive clean-lock function ensure efficient cleaning and disinfection.

The multiple modality design enables the TE5 to easily handle a wide range of medical scenarios.

Simple experience with intuitive workflow

The TE5 is the first to realize gesture control on full touch screen, leading to a simpler workflow and faster response, while also being suitable for complex clinical applications.



High Definition Touch Screen

State-of-the-art fingertip operation, even with gel-covered gloves, provides simple control and setting optimization at the swipe of a finger.

Gesture-Based Workflow

Gesture controls are the most efficient way to satisfy all clinical functions, and also allow flexibility of user-programming.

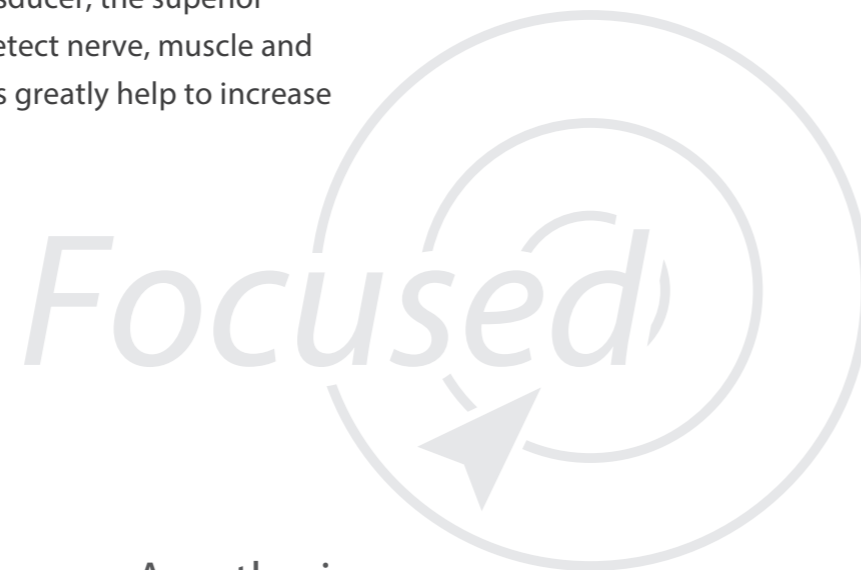
Powerful Data Management

The TE5 can support complete patient data management on board. With up to 8 minutes of prospective storage, the TE5 optimized the full recording of special procedures. The 120GB solid state hard drive not only expeditiously handles large amounts of data, but also facilitates efficient image archiving and review.

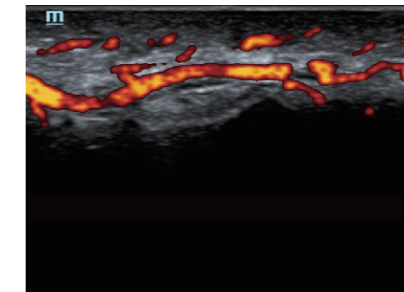
Simple

Superior performance with focused features

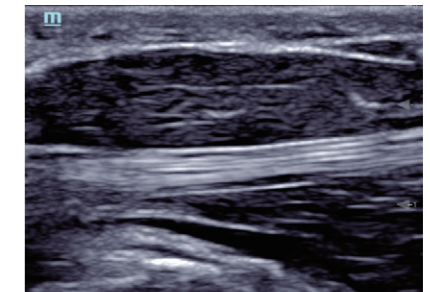
With the high performance linear transducer, the superior resolution of the TE5 is excellent for detect nerve, muscle and tendon. A series of advanced functions greatly help to increase confidence and safety of procedures.



Supraspinatus Tendon



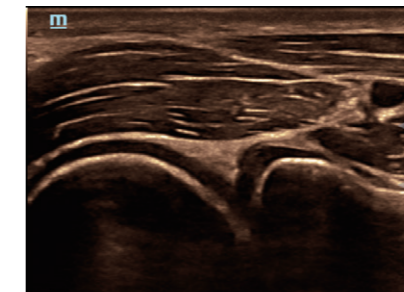
Fingertip Blood Flow



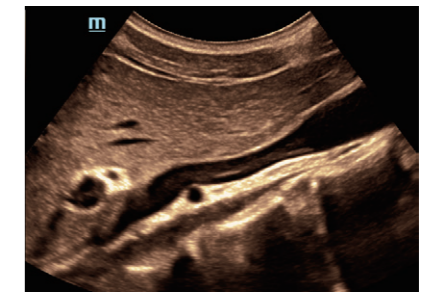
Flexor pollicis longus muscle



Flexor digitorum profundus & superficialis



Elbow Joint



IVC

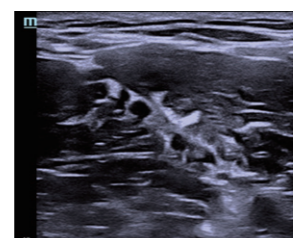
Anesthesia

iNeedle™: optimize needle visualization

Advanced needle visualization allows increased visibility of the needle and tip even during steep-angled procedures, while maintaining superior image quality.

iZoom: full screen view

iZoom with high standard performance offers a larger image displaying area, facilitating clearer observation at a distance during nerve block procedures.



Brachial plexus



Median Nerve

Musculoskeletal

Wide Range Transducer Family

The TE5 provides comprehensive transducer solutions, including transducers well-balanced for both superficial and deep tissues, and a 20MHz ultra-high frequency transducer for tissues within 2cm.

Sensitive Power Doppler

Sensitivity of Power Doppler Imaging enables the detection of small vessels and inflammation, as well as conditions such as rheumatoid arthritis.

Dual Comparison

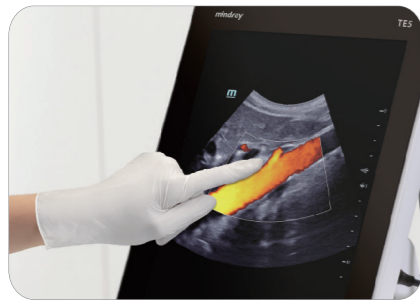
Dual comparison solutions provide dual visualization with options of two real-time images or a real-time image and historical frozen image, side-by-side in wide-screen format, particularly suitable for MSK applications.





Smart design with innovative ergonomics

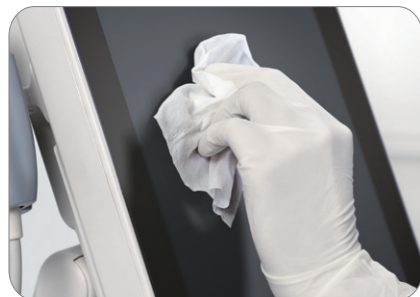
With its slim profile, the TE5 is easy to transport and store. As well as being mounted on an ergonomic cart, it can also be mounted on a desktop stand or a wall mount for a wide viewing angle. The seamless and non-porous touch screen allows comprehensive disinfection solutions, secured with a 10-second screen-lock feature for easy cleaning, even during exams.



Touch enabled screen responsive to gloves and gel



Convenient accessory supply bins



Seamless screen design for disinfecting and cleaning



Retractable power cable for efficient transport and storage



Wall mount for operation room



Desktop stand for clinic usability

15" touch screen with anti-glare and wide viewing angle

Transducer cable management for cord longevity and ease of use



Built-in battery provides long battery life



Built-in wireless network



Height adjustable smart trolley

